

Model

Designation **CU NLE8.8CN R290 230/1/50 CAP**

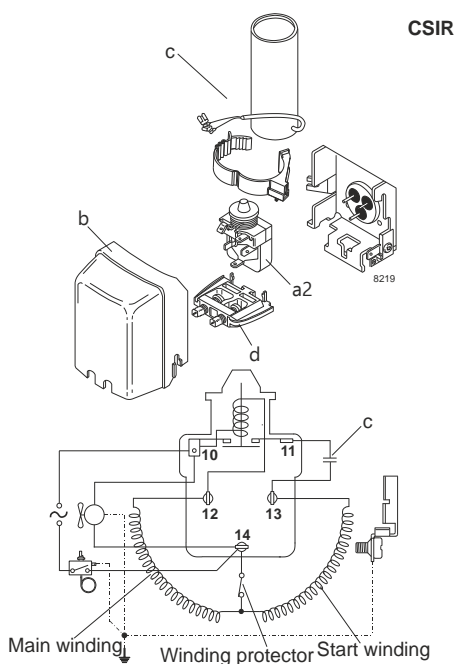
Sales code: 314H5000
Engineering code: CUNLE88CN0CE

Components Condensing-Unit / Spare Parts

Component	Type	Spare part code number
Compressor code	NLE8.8CN	105H6880
Condenser	Condenser (3 rows x 11 tubes)	SP 314S0010
Fan motor	14W	MP 314S0016
Blade code	ø254mm 28°	SP 314S0027
Air flow	551,4m³/h	
Receiver code	not installed	-/-
Suction valve code	OD ø8mm / 1/3in	-/-
Liquid valve code	OD ø6mm / 1/4in	-/-

Compressor starting equipment	Spare part code number
pos. a2 - relay	117U7002
pos. c - start capacitor (80µF)	117U5015
pos. b - plastic cover	103N0491
pos. d - cord relief	103N1010

Wiring Sketch Compressor



Model

Designation **CU NLE8.8CN R290 230/1/50 CAP**

Sales code: 314H5000

Engineering code: CUNLE88CN0CE

Cooling performance - Conf. 1

Power supply	220-240V / 50Hz 1~	Voltage range	198 - 254V / 50Hz					
Refr. charge - tech. limit	150g / 5,3oz							
Starter	HST / capillary tube or expansion valve							
Motor configuration	CSIR							
Refrigerant	R290							
Application	LBP+MBP							
Approvals	Eco design (EU) 2015/1095, CE, UK CA, VDE							

ambient temperature	[°C / °F]	25 / 77							(suction gas temperature [°C / °F]: 20 / 68, subcooling: 2K)
evaporating temperature	[°C / °F]	-35 / -31	-30 / -22	-25 / -13	-20 / -4	-10 / 14	0 / 32	10 / 50	
cooling capacity	[W]	253	321	404	501	737	1023	1349	
COP	[W/W]	1,25	1,43	1,65	1,87	2,34	2,82	3,26	
cooling capacity	[Btu/h]	866	1098	1380	1712	2518	3494	4608	
power consumption	[W]	203	224	245	268	315	363	414	
current consumption	[A]	1,6	1,6	1,7	1,8	1,9	2,1	2,3	

ambient temperature	[°C / °F]	32 / 90							(suction gas temperature [°C / °F]: 20 / 68, subcooling: 2K)
evaporating temperature	[°C / °F]	-35 / -31	-30 / -22	-25 / -13	-20 / -4	-10 / 14	0 / 32	10 / 50	
cooling capacity	[W]	263	324	397	482	688	938	1226	
COP	[W/W]	1,21	1,36	1,51	1,68	2,02	2,36	2,65	
cooling capacity	[Btu/h]	897	1106	1355	1645	2348	3204	4186	
power consumption	[W]	217	239	263	287	340	398	462	
current consumption	[A]	1,6	1,7	1,8	1,8	2	2,2	2,5	

ambient temperature	[°C / °F]	38 / 100							(suction gas temperature [°C / °F]: 20 / 68, subcooling: 2K)
evaporating temperature	[°C / °F]	-35 / -31	-30 / -22	-25 / -13	-20 / -4	-10 / 14	0 / 32	10 / 50	
cooling capacity	[W]	247	304	372	449	634	859	1118	
COP	[W/W]	1,11	1,24	1,37	1,5	1,76	2	2,21	
cooling capacity	[Btu/h]	843	1039	1269	1533	2166	2934	3820	
power consumption	[W]	222	246	272	300	361	429	505	
current consumption	[A]	1,6	1,7	1,8	1,9	2,1	2,4	2,7	

ambient temperature	[°C / °F]	43 / 109							(suction gas temperature [°C / °F]: 20 / 68, subcooling: 2K)
evaporating temperature	[°C / °F]	-35 / -31	-30 / -22	-25 / -13	-20 / -4	-10 / 14	0 / 32	10 / 50	
cooling capacity	[W]	223	279	343	415	586	793	1031	
COP	[W/W]	1	1,12	1,23	1,34	1,55	1,74	1,9	
cooling capacity	[Btu/h]	763	953	1170	1417	2002	2708	3519	
power consumption	[W]	222	249	278	309	377	455	543	
current consumption	[A]	1,6	1,7	1,8	1,9	2,2	2,5	2,8	